

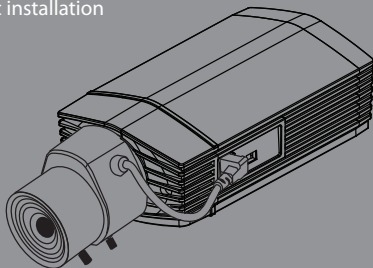


Quick Installation Guide

HD Day & Night WDR Network Camera

This document will guide you through the basic installation process for your new D-Link Network Camera.

DCS-3710



DCS-3710 Quick Installation Guide

This installation guide provides basic instructions for installing the DCS-3710 Network Camera on your network. For additional information about how to use the camera, please see the User Manual which is available on the CD include in this package or from the D-Link support website.

Installation Steps

1. Verify the package contents against the list below.
2. Hardware Overview
3. Hardware Installation
4. Configuration with Wizard
5. Adjust the Zoom/Focus

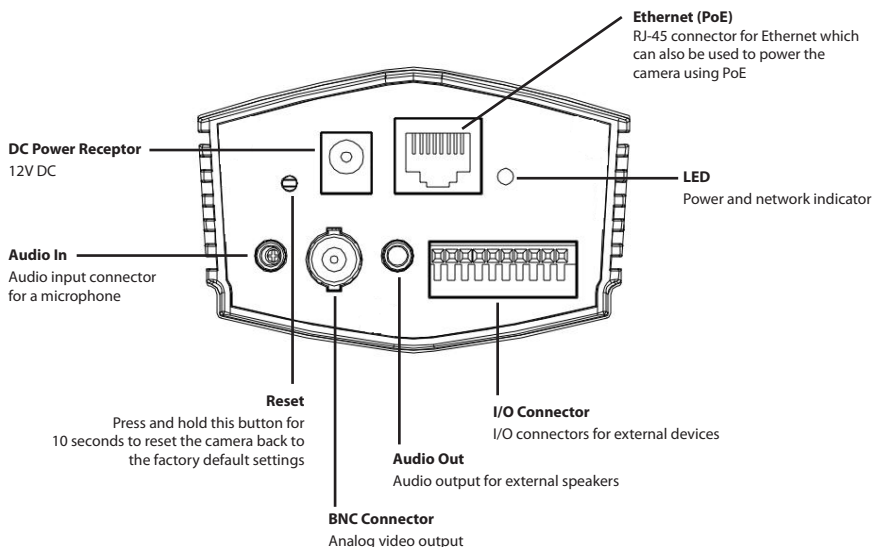
1. Package Contents

- DCS-3710 Network Camera
- CAT5 Ethernet Cable
- Camera Stand
- Power Adapter
- C-CS Mount Adapter (5mm Ring)
- CD-ROM with Software and Manual
- Quick Install Guide

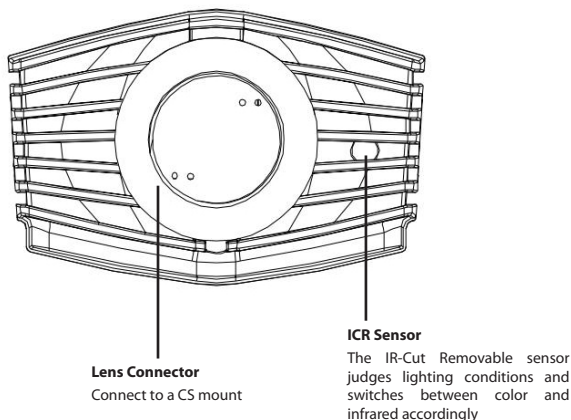
If any of the above items are missing, please contact your reseller.

2. Hardware Overview

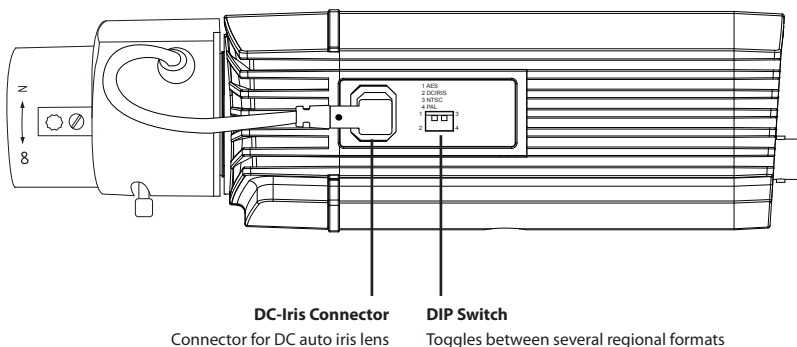
Rear Panel



Front Panel

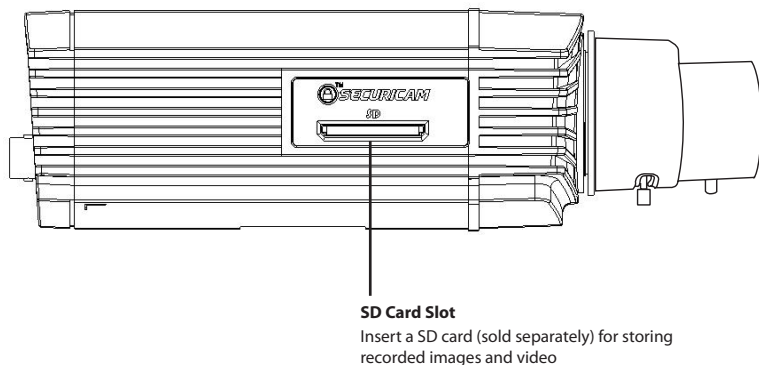


Right Panel



1 3	1. AES: Auto Electric Shutter
2 4	2. DC IRIS: Toggle auto iris (DC drive)
	3. NTSC: TV output signal selector
	4. PAL: TV output signal selector

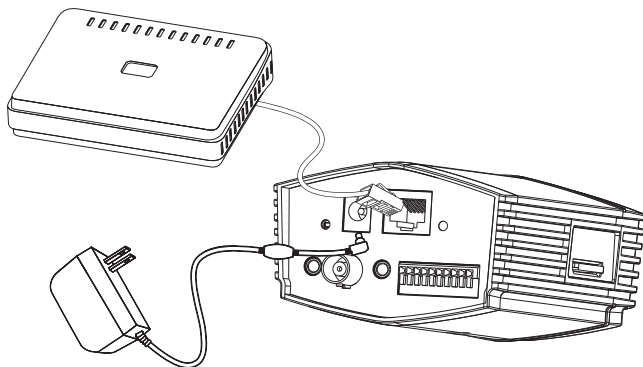
Left Panel



3. Hardware Installation

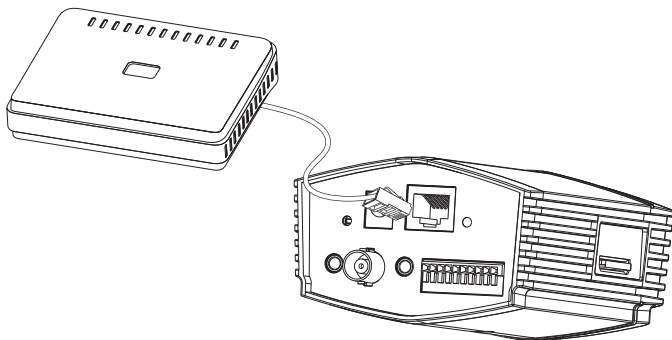
Basic Connection (without PoE)

Connect the camera to your switch or router via Ethernet cable, and then connect the supplied power adapter from the camera to a power outlet or surge protector.



Connection Using a PoE Switch

If you are using a PoE switch or router, connect the network camera via Ethernet cable. The Ethernet cable will transmit data and power.



Note: Once power has been established, the LED will turn red. When the device has obtained an IP address and is accessible, the LED will turn green.

4. Configuration with Wizard

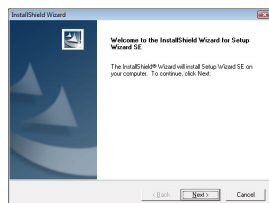
Insert the DCS-3710 CD into your computer's CD-ROM drive to begin the installation. If the Autorun function on your computer is disabled, or if the D-Link Launcher fails to start automatically, click **Start > Run**. Type **D:\autorun.exe**, where D: represents the drive letter of your CD-ROM drive.

Click **Setup Wizard** to begin the installation.

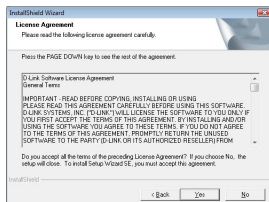


After clicking Setup Wizard, the following window will open.

Click **Next** to continue.

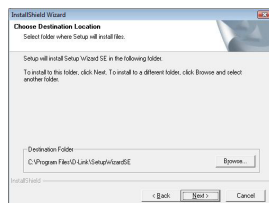


Click **Yes** to accept the License Agreement.

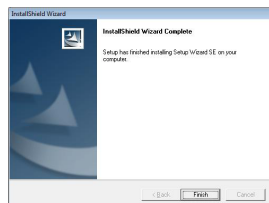


To start the installation process, click **Next**.

Note: The installation may take several minutes to finish.

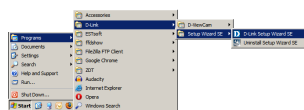


Click **Finish** to complete the installation.



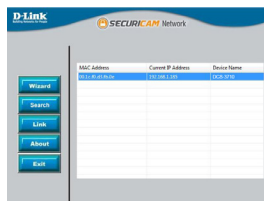
Click on the **D-Link Setup Wizard SE** icon that was created in your Windows Start menu.

Start > D-Link > Setup Wizard SE



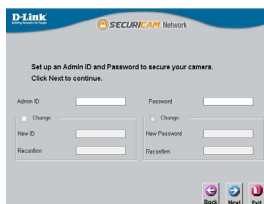
The Setup Wizard will appear and display the MAC address and IP address of your camera(s). If you have a DHCP server on your network, a valid IP Address will be displayed. If your network does not use a DHCP server, the network camera's default static IP **192.168.0.20** will be displayed.

Click the **Wizard** button to continue.



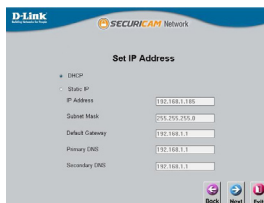
Enter the Admin ID and password. When logging in for the first time, the default Admin ID is **admin** with the password left blank.

Click **Next** to proceed to the next page.



Select **DHCP** if your camera obtains an IP address when it boots up from a DHCP server (i.e. router). Select **Static IP** if the camera will use the same IP address each time it is started.

Click **Next** to proceed to the next page.



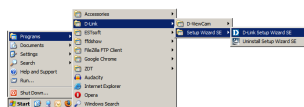
Take a moment to confirm your settings and click **Restart**.



Viewing Camera via Web Browser

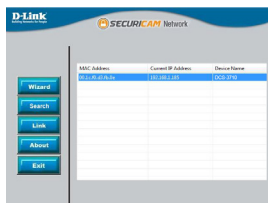
Click on the **D-Link Setup Wizard SE** icon that was created in your Windows Start menu.

Start > D-Link > Setup Wizard SE



Select the camera and click the **Link** button to access the web configuration.

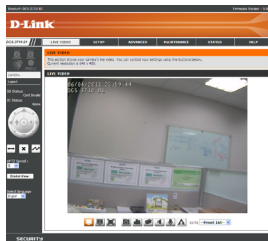
The Setup Wizard will automatically open your web browser to the IP address of the camera.



Enter **admin** as the default username and leave the password blank. Click **OK** to continue.



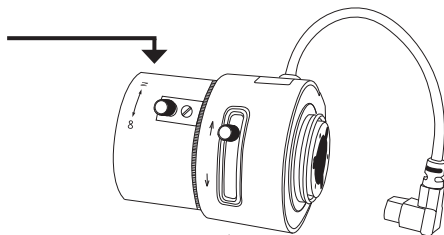
This section shows your camera's live video. You can select your video profile and view or operate the camera. For additional information about web configuration, please refer to the user manual included on the CD-ROM or the D-Link website.



5. Adjust the Zoom/Focus

Adjust Focus

Unscrew the focus controller to loosen it. Adjust the focal range by moving the controller to the left or right until the image is clear. Tighten the focus controller once completed.



Adjust Zoom Ratio

Unscrew the focus controller to loosen the zoom controller. Adjust the zoom factor by moving the controller the left or right until the desired range is achieved. Tighten the zoom controller once completed.



Notes

Notes

Technical Support

D-Link's website contains the latest user documentation and software updates for D-Link products.

U.S. and Canadian customers can contact D-Link Technical Support through our website or by phone.

United States

Telephone

(877) 354-6555

World Wide Web

<http://support.dlink.com>

Canada

Telephone

(877) 354-6560

World Wide Web

<http://support.dlink.ca>

D-Link[®]

Version 2.0

October 14, 2011

Copyright ©2011 D-Link Corporation/D-Link Systems, Inc. All rights reserved. D-Link and the D-Link logo are registered trademarks of D-Link Corporation or its subsidiaries in the United States and other countries. Other trademarks are the property of their respective owners. Product specifications, size and shape are subject to change without notice, and actual product appearance may differ from that depicted on the packaging. Visit www.dlink.com (US) or www.dlink.ca (Canada) for more details.